

Customer :

customer

Customer part :

customer part

Comment :

Comment

S1=2.34

S2=2.89

Tmax=456

Tp S2=495.0

PI=0.45

HI=115

Sample =1636.10

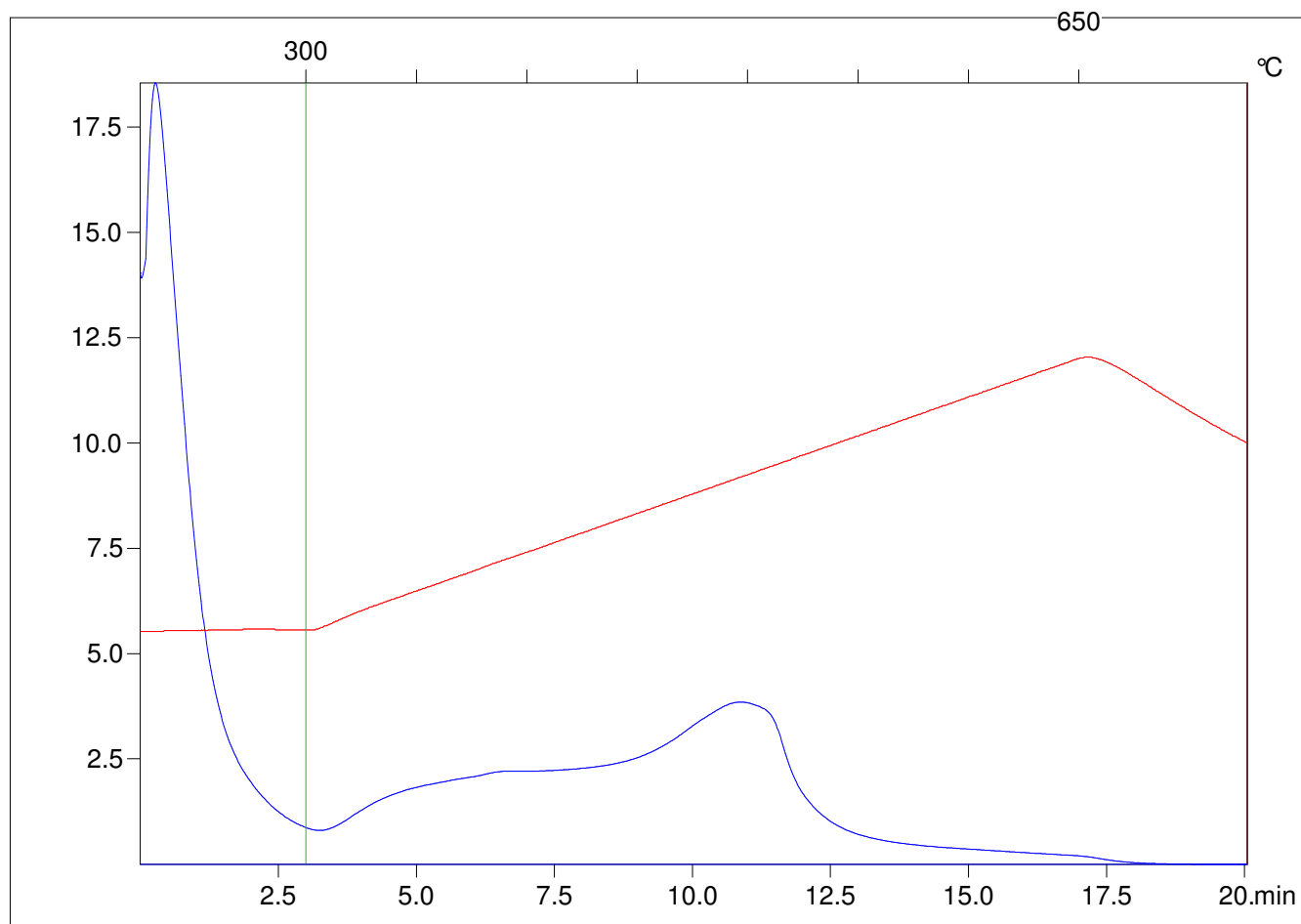
Method =Bulk Rock

Cycle=Basic

KFID(10*9)=1444

Qty =70.7

TOC=2.51



C:\VINCI\PK1792\PK033.R00 : FID pyrolysis graphic

State

Pyro Status

Oxi Status